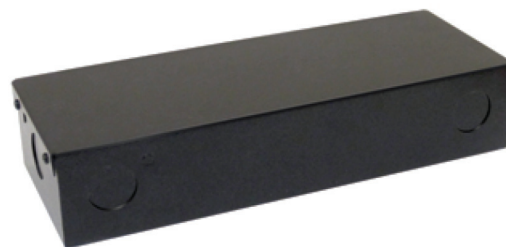
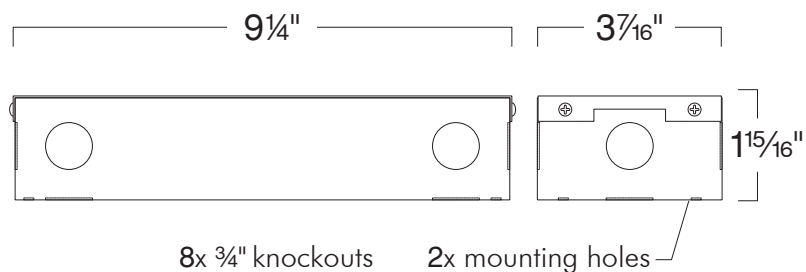


LD533V024-200-DLV-JB - 200W 120V/ELV DIMMING DRIVER (24V DC) LINKALED PUCK



SPECIFICATION

120V AC 200W LED

Features:

Isolated output power per NEC and UL Safety Requirements

Auto-Rest; Short Circuit, Overload and Thermal Protection

Listed Wiring Enclosure with Multiple Knockouts

Remote Mounting up to 18 feet away at full load with 18AWG Wiring

Dimming: Low Voltage dimming works with standard Electronic Low Voltage Dimmers. Factory qualified for use with LUTRON Brand Dimmers: SELV-300P, DVELV-300P, NELV-450 along with 3-Way versions. (-DLV) Dimming Option also compatible with Grafik Eye and Home Works Dimming Interfaces.

Electrical:

Input Voltage: 120VAC/60 HZ

Input Current: 1.6A at 120V AC

Allowable Temperature: -10F to 130F

Efficiency: 85% Min






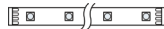
Power Factor: >98%

THD Max: 10%

IP RATING: IP60 Dry Location Only

Label: cETL Listed

COMPATIBILITY

 <p>LK136LED</p> <p>LINKALED PUCK LIGHT (RECESSED)</p>	 <p>LULEDBW</p> <p>WET LOCATION LED BAR</p>	 <p>LK136SLED</p> <p>LINKALED PUCK LIGHT (SURFACE MOUNTED)</p>
 <p>LULEDB</p> <p>LINKALED BAR</p>	 <p>LULEDBP</p> <p>PROFESSIONAL GRADE LED STICK</p>	 <p>LUTKLED24V1</p> <p>24V 12" STRIP</p>
<p>LD5V24-24-PI</p> <p>24V/24W PLUG IN DRIVER</p>		

Note: Wattage limitations on compatible items must be met.

Benefit:

- Dimmable with ELV Dimmers
- Large J-box for easy connections
- Runs cooler than Magnetic Drivers
- Works in Non-Dimming Applications as well